



BIKTARVY[®]

bictegravir 50mg/emtricitabine 200mg/
tenofovir alafenamide 25mg tablets

**#1 PRESCRIBED
HIV TREATMENT***

*Source: I/QVIA NPA Weekly, 04/19/2019 through 01/20/2023.



KEEP BEING YOU

Because HIV doesn't change who you are.

Ask your healthcare provider if BIKTARVY is right for you.

BIKTARVY is a complete, 1-pill, once-a-day prescription medicine used to treat HIV-1 in certain adults. **BIKTARVY does not cure HIV-1 or AIDS.**

People featured are compensated by Gilead.

Please click to see Important Facts about BIKTARVY[®], including an important warning on worsening of hepatitis B infection, on page 20.

Table of Contents

About BIKTARVY	3
Who Can Take BIKTARVY	4
How BIKTARVY Works	5
BIKTARVY Studies	6
Starting or Switching to BIKTARVY	7
5 Years of Data	8
Possible Side Effects	10
Taking BIKTARVY	11
Questions for You and Your Healthcare Provider	12
Support & Resources	15
Real Stories. Real Voices.	16



BIKTARVY[®]
bictegravir 50mg/emtricitabine 200mg/
tenofovir alafenamide 25mg tablets

Please see Important Facts about **BIKTARVY**[®],
including important warnings, on page 20.



Living Healthy With HIV-1

Today's medicines are helping people live healthy with HIV. While there's no cure, there are powerful treatments that work quickly to fight and suppress the virus. Don't wait. Talk to your healthcare provider about starting treatment as soon as possible after diagnosis.

When taken every day, these treatments can lower the amount of virus in the blood to levels that are undetectable. That's when the amount is so low it can't be measured in a lab test.

According to the U.S. Department of Health and Human Services (DHHS), taking HIV treatment every day and getting to and staying undetectable prevents transmitting HIV through sex.

Talk to your healthcare provider about these considerations when discussing your HIV-1 treatment options.



Discover the answers at [BIKTARVY.com](https://www.biktarvy.com)



Please see Important Facts about **BIKTARVY**, including important warnings, on page 20.

The Most Prescribed HIV Treatment

Source: IQVIA NPA Weekly, 04/19/2019 through 01/20/2023.*

WHAT IS BIKTARVY®?



Not actual size
(15 mm x 8 mm)

BIKTARVY is:

- ▶ A complete HIV-1 treatment
- ▶ Taken once a day
- ▶ 1 small pill
- ▶ Taken with or without food

BIKTARVY is a prescription medicine for adults and children with HIV-1 who weigh at least 55 lbs and who are either:

- ▶ new to HIV-1 treatment **OR** ▶ replacing their current regimen
- ▶ For adults and children replacing their current regimen, their healthcare provider must determine if they meet certain requirements, including having an undetectable viral load (less than 50 copies/mL)

BIKTARVY does not cure HIV-1 or AIDS. HIV is the virus that causes AIDS.

Ask your healthcare provider if BIKTARVY® is right for you.

*Note: This information is an estimate derived from the use of information under license from the following IQVIA information service: IQVIA NPA Weekly, for the period week ending 04/19/2019 through week ending 01/20/2023. IQVIA expressly reserves all rights, including rights of copying, distribution, and republication.



Important Safety Information

What is the most important information I should know about BIKTARVY?

Serious side effects may occur in some people who take BIKTARVY, including:

- ▶ **Worsening of hepatitis B (HBV) infection**
Your healthcare provider will test you for HBV. If you have both HIV-1 and HBV and stop taking BIKTARVY, your HBV may suddenly get worse. Do not stop taking BIKTARVY without first talking to your healthcare provider, as they will need to monitor your health, and may give you HBV medicine.

Contact your healthcare provider right away if you experience any side effects that bother you or do not go away. Do not stop taking BIKTARVY without talking to your healthcare provider.



BIKTARVY®

bictegravir 50mg/emtricitabine 200mg/
tenofovir alafenamide 25mg tablets

Please see Important Facts about BIKTARVY®, including important warnings, on page 20.



A Powerful Treatment

Built to start fast

The 3 powerful medicines in BIKTARVY were designed to attack the virus right away and to work together to lower the amount of HIV in the blood to undetectable levels.

According to DHHS, many patients can get to undetectable in as quickly as 8 to 24 weeks, when taking their treatment as prescribed. Some people are even able to start treatment the same day as diagnosis.

The 3 powerful medicines in BIKTARVY work quickly to fight the virus.



Ask your healthcare provider if BIKTARVY® is right for you.



BIKTARVY®
bicitegravir 50mg/emtricitabine 200mg/
tenofovir alafenamide 25mg tablets

Please see Important Facts about **BIKTARVY®** and **DESCOVY®**, including important warnings, on pages 20-21.

Studied in a Diverse Group of Adults

BIKTARVY® was evaluated in 4 clinical trials, involving more than 2,400 adults living with HIV.

- ▶ Two studies involved more than 1,200 adults new to HIV-1 treatment (634 new to BIKTARVY and 640 new to other treatments*) over a 3-year period. At the end of the 3 years, most adults who had either been taking BIKTARVY continued or who were taking other treatments switched to BIKTARVY, and these groups were studied for an additional 2 years. Together, these study periods examined BIKTARVY in adults new to treatment for a total of 5 years.
- ▶ Two additional studies involved more than 1,100 adults who replaced or continued their current treatment (572 replaced their current treatment with BIKTARVY and 568 continued their current treatment†) over a 1-year period.

*The other treatments were TRIUMEQ® (abacavir, dolutegravir, lamivudine) or DESCOVY® (emtricitabine, tenofovir alafenamide) + TIVICAY® (dolutegravir).

†The continued treatments were TRIUMEQ (abacavir, dolutegravir, lamivudine), or a combination of either EPZICOM® (abacavir, lamivudine) or TRUVADA® (emtricitabine, tenofovir disoproxil fumarate) + atazanavir or darunavir (with cobicistat or ritonavir).

Who should not take BIKTARVY?

Do not take BIKTARVY if you take:

- ▶ dofetilide
- ▶ rifampin
- ▶ any other medicines to treat HIV-1

BIKTARVY is a complete treatment for HIV-1. Do not take it with any other HIV-1 medicines.



BIKTARVY®

bictegravir 50mg/emtricitabine 200mg/
tenofovir alafenamide 25mg tablets

Please see Important Facts about BIKTARVY®, including important warnings, on page 20.

Starting or Switching

Whether you're starting or switching, BIKTARVY can help you reach and stay undetectable. Undetectable is when the amount of virus in your blood is below the level that can be measured in a lab test (less than 50 copies/mL).

Starting BIKTARVY

Long-term viral suppression

Both 3-year and 5-year clinical study timepoints showed that most adults new to treatment taking BIKTARVY every day reached and stayed undetectable.

Increase CD4 T-cell count

BIKTARVY can help increase the number of CD4 T-cells in your blood. T-cells are an important part of your immune system because they help your body fight infections.

Switching to BIKTARVY

BIKTARVY can help you stay undetectable and maintain your CD4 T-cell count. Before taking BIKTARVY, your healthcare provider must determine that you meet certain requirements.

Starting or switching your HIV-1 treatment is an important decision. Your healthcare provider should always work with you to decide what medicine makes sense.



BIKTARVY can help you get to and stay undetectable and was shown to work regardless of age, sex, race, viral load, or CD4 T-cell count.



BIKTARVY®

bictegravir 50mg/emtricitabine 200mg/
tenofovir alafenamide 25mg tablets

Please see Important Facts about BIKTARVY®, including important warnings, on page 20.



Zero Resistance Over 5 Years

It's important to take your treatment as prescribed, because low levels of medicine in your blood may make it easier for the HIV virus to mutate, or change. Some mutations can cause drug resistance, which means your medicine may stop working and make the virus harder to treat.

A medicine's barrier to resistance refers to how well it works, even when the virus has mutated. When a medicine has a high barrier to resistance, it means the medicine may still work even if the virus has mutated.

Taking a treatment that has a high barrier to resistance, like BIKTARVY, and taking your medication every day can help prevent drug resistance.



Zero adults new to treatment developed drug resistance to BIKTARVY through 5 years of clinical trials.

Talk to your healthcare provider about why resistance matters.



BIKTARVY®

bictegravir 50mg/emtricitabine 200mg/
tenofovir alafenamide 25mg tablets

Please see Important Facts about **BIKTARVY®**,
including important warnings, on page 20.

Proven Safety Data Over 5 Years

THE 5-YEAR STUDIES REVEALED



Less than 1% of adults new to treatment stopped taking BIKTARVY due to related side effects.*

This only includes people who initially started on BIKTARVY at the beginning of the clinical trials.

In clinical trials, no patients stopped taking BIKTARVY due to bone-, kidney-, or liver-related side effects.

Of the patients who initially started on BIKTARVY at the beginning of the clinical trials, the most common side effects of BIKTARVY through 5 years, experienced in at least 5% of people in either study, were diarrhea, headache, and nausea.

*The side effects, also known as adverse events related to BIKTARVY that led to patients to stop taking BIKTARVY over the 5-year studies, were: weight gain; chest pain; bloating; sleep disorder, indigestion, tension headache, depressed mood, and insomnia; depression.



BIKTARVY®

bictegravir 50mg/emtricitabine 200mg/
tenofovir alafenamide 25mg tablets

Please see Important Facts about **BIKTARVY®**,
including important warnings, on page 20.

Possible Side Effects

The most common side effects of BIKTARVY in clinical studies through 3 years were each experienced in at least 5% of people. In clinical studies of 634 adults new to HIV-1 treatment with BIKTARVY, the most common side effects were diarrhea (6%), nausea (6%), and headache (5%).



These common side effects were each experienced by at least 1 out of 20 people

These are not the only side effects of BIKTARVY. Tell your healthcare provider if you have any side effects that bother you or do not go away.

You are encouraged to report negative side effects of prescription drugs to the FDA. Visit www.fda.gov/medwatch or call **1-800-FDA-1088**.

BIKTARVY may also cause serious side effects, including:

- ▶ **Changes in your immune system.** Your immune system may get stronger and begin to fight infections that may have been hidden in your body. Tell your healthcare provider if you have any new symptoms after you start taking BIKTARVY.
- ▶ **Kidney problems, including kidney failure.** Your healthcare provider should do blood and urine tests to check your kidneys. If you develop new or worse kidney problems, they may tell you to stop taking BIKTARVY.
- ▶ **Too much lactic acid in your blood (lactic acidosis),** which is a serious but rare medical emergency that can lead to death. Tell your healthcare provider right away if you get these symptoms: weakness or being more tired than usual, unusual muscle pain, being short of breath or fast breathing, stomach pain with nausea and vomiting, cold or blue hands and feet, feel dizzy or lightheaded, or a fast or abnormal heartbeat.
- ▶ **Severe liver problems,** which in rare cases can lead to death. Tell your healthcare provider right away if you get these symptoms: skin or the white part of your eyes turns yellow, dark “tea-colored” urine, light-colored stools, loss of appetite for several days or longer, nausea, or stomach-area pain.

Ask your healthcare provider if BIKTARVY is right for you and learn more at BIKTARVY.com.



BIKTARVY®

bictegravir 50mg/emtricitabine 200mg/
tenofovir alafenamide 25mg tablets

Please see Important Facts about BIKTARVY®, including important warnings, on page 20.

Fits Into Your Daily Routine & Goes Where You Go

With BIKTARVY, you have control of taking your HIV treatment in the palm of your hand. It is a once-daily treatment that doesn't need to be taken in a healthcare provider's office.

SIMPLE DOSING



**1 small* pill,
once a day**



**Taken any time
of day**



**With or
without food**

Take BIKTARVY exactly as your healthcare provider tells you to take it. Do not miss a dose.

Do not change your dose or stop taking BIKTARVY without first talking with your healthcare provider.

Stay under a healthcare provider's care when taking BIKTARVY.

*Pill size: 15 mm x 8 mm.



THE BIKTARVY ANYWHERE™ Pack

- Portable, compact size that can be taken on the go
- A convenient package that helps visually track your medication
- Available at no extra cost

Ask your healthcare provider about the BIKTARVY ANYWHERE pack.

Four cards hold 7 pills each, and one card holds 2 pills, for 30 pills total per pack. Each card in a pack is 106 mm x 71 mm x 8.5 mm. Store at room temperature between 68° F and 77° F. Keep each pill in original pack until use.

Understand how to take your HIV-1 treatment and tell your healthcare provider about all the medicines you are taking, including over-the-counter medicines, antacids, laxatives, vitamins, and herbal supplements.



BIKTARVY®

bictegravir 50mg/emtricitabine 200mg/
tenofovir alafenamide 25mg tablets

Please see Important Facts about **BIKTARVY®**,
including important warnings, on page 20.

A man with grey hair and glasses, wearing a dark long-sleeved shirt, is looking at a potted plant with yellow and purple flowers. A woman with grey hair, wearing a light blue shirt and a green apron, is holding the plant. They are in a garden with many other plants and a metal trellis in the background.

Important Questions You May Ask

What should I do if I take too much?

- ▶ If you take too much BIKTARVY, call your healthcare provider or go to the nearest hospital emergency room right away.

What should I do if I run out of medicine?

- ▶ When your BIKTARVY supply starts to run low, get more from your healthcare provider or pharmacy. This is very important because the amount of virus in your blood may increase if the medicine is stopped even for a short time. The virus may develop resistance to BIKTARVY and become harder to treat.

Find answers to more important questions at [BIKTARVY.com](https://www.biktaryv.com).



BIKTARVY®

bictegravir 50mg/emtricitabine 200mg/
tenofovir alafenamide 25mg tablets

Please see Important Facts about [BIKTARVY®](#),
including important warnings, on page 20.

Talking With Your Healthcare Provider

BIKTARVY can affect the way other medicines work, and other medicines can affect how BIKTARVY works, which may cause serious side effects. Some medicines may also make the amount of BIKTARVY in your body too low to help keep your HIV-1 undetectable, and the virus may become resistant to BIKTARVY.

What should I tell my healthcare provider before taking BIKTARVY?

Tell your healthcare provider about all your health problems and if you have or have had any kidney or liver problems, including hepatitis virus infection.

Tell your healthcare provider about all the medicines you take, including prescription and over-the-counter medicines, antacids, laxatives, vitamins, and herbal supplements. Some medicines may interact with BIKTARVY. Keep a list of your medicines and show it to your healthcare provider and pharmacist when you get a new medicine.

- ▶ You can ask your healthcare provider or pharmacist for a list of medicines that interact with BIKTARVY.
- ▶ **Do not start a new medicine without telling your healthcare provider.** Your healthcare provider can tell you if it is safe to take BIKTARVY with other medicines.

What if I am pregnant or breastfeeding, or planning to become pregnant or breastfeed?

- ▶ **Tell your healthcare provider if you are pregnant** or plan to become pregnant. It is not known if BIKTARVY can harm your unborn baby. Tell your healthcare provider if you become pregnant while taking BIKTARVY.
- ▶ **Tell your healthcare provider if you are breastfeeding** (nursing) or plan to breastfeed. Do not breastfeed if you take BIKTARVY. HIV-1 can be passed to the baby in breast milk.



BIKTARVY®

bictegravir 50mg/emtricitabine 200mg/
tenofovir alafenamide 25mg tablets

Please see Important Facts about **BIKTARVY®**, including important warnings, on page 20.



Your Partner in Health

Your healthcare provider is committed to being your partner in health. They know you and they know how to treat your HIV-1.

Here are a few questions to help you get the conversation started.

- What are the possible benefits of starting HIV-1 treatment right away? What treatments can I start right away?**
- What factors are you considering in choosing an HIV-1 treatment that is right for me?**
- How might HIV-1 treatment affect the other medicines I take?**
- What are the possible side effects of HIV-1 treatment and how may the side effects impact my body over time?**
- How does starting and staying on treatment help me live healthy with HIV-1?**
- Does the treatment you're considering for me have a high barrier to resistance?**

BIKTARVY does not cure HIV-1 or AIDS. HIV-1 is the virus that causes AIDS.

Ask your healthcare provider about other factors you think are important when making a decision about your HIV-1 treatment.



TAKE A SCREENSHOT OF THESE QUESTIONS TO ASK YOUR HEALTHCARE PROVIDER AT YOUR NEXT APPOINTMENT.



BIKTARVY®

bictegravir 50mg/emtricitabine 200mg/
tenofovir alafenamide 25mg tablets

Please see Important Facts about BIKTARVY®, including important warnings, on page 20.

Support & Resources

If your healthcare provider has already determined that a Gilead treatment is right for you, then the Gilead Advancing Access® program is committed to [helping you afford your Gilead medication](#) every step of the way.

Worried about cost?



Insurance or no insurance, Gilead's Advancing Access program may be able to help. If eligible, Advancing Access may be able to help you lower your co-pay to as little as \$0. If you do not have insurance, you may be able to receive BIKTARVY free of charge if you qualify for the Advancing Access Patient Assistance Program.*

*Gilead Advancing Access co-pay coupon card program is for eligible, commercially insured patients only. Restrictions apply. Uninsured patients can reach out to Gilead's Advancing Access program for information about support options. See full terms and conditions at GileadAdvancingAccess.com.

Advancing Access specialists can help you understand your health insurance and Gilead medication costs.



For more information, visit GileadAdvancingAccess.com or call **1-800-226-2056**, M-F, 9 AM to 8 PM ET.



BIKTARVY®
bictegravir 50mg/emtricitabine 200mg/
tenofovir alafenamide 25mg tablets

Please see Important Facts about **BIKTARVY®**, including important warnings, on page 20.

REAL STORIES

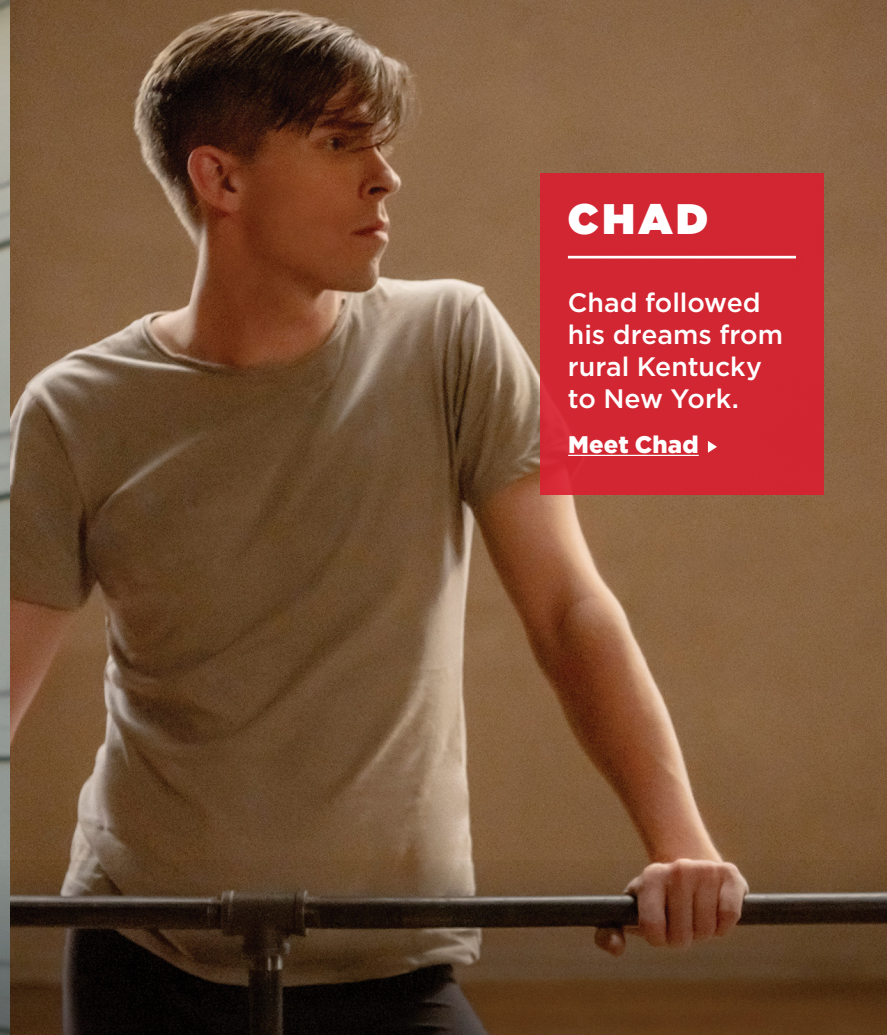
REAL VOICES



ELIAS

Living in San Francisco has always been a dream for Elias.

[Meet Elias >](#)



CHAD

Chad followed his dreams from rural Kentucky to New York.

[Meet Chad >](#)



D'EVA

Finding community, love, and purpose, D'Eva is taking her power back.

[Meet D'Eva >](#)



BIKTARVY[®]

bictegravir 50mg/emtricitabine 200mg/
tenofovir alafenamide 25mg tablets

Please see Important Facts about **BIKTARVY[®]**, including important warnings, on page 20.

REAL STORIES

REAL VOICES



HUGO

A lifelong student, Hugo is a man of faith and science.

[Meet Hugo >](#)



NIKKI

Nikki found her voice and now helps others do the same.

[Meet Nikki >](#)



THERON

Home is where the heart is for Theron and his husband, David.

[Meet Theron >](#)



BIKTARVY®

bictegravir 50mg/emtricitabine 200mg/
tenofovir alafenamide 25mg tablets

Please see Important Facts about **BIKTARVY®**, including important warnings, on page 20.

REAL STORIES

REAL VOICES



ZACH

An avid outdoorsman, every day is an adventure for Zach.

[Meet Zach >](#)



PHIL

Volunteering put Phil on a path to higher education and helping others.

[Meet Phil >](#)



DIMITRI

New York tries to keep up with Dimitri as he helps others.

[Meet Dimitri >](#)



BIKTARVY®

bictegravir 50mg/emtricitabine 200mg/
tenofovir alafenamide 25mg tablets

Please see Important Facts about **BIKTARVY®**, including important warnings, on page 20.



BIKTARVY[®]

bictegravir 50mg/emtricitabine 200mg/
tenofovir alafenamide 25mg tablets

**#1 PRESCRIBED
HIV TREATMENT***



ELIAS



CHAD



D'EVA



HUGO



NIKKI



THERON



DIMITRI



ZACH



PHIL

REAL STORIES

REAL VOICES

Meet a few of the extraordinary people who take BIKTARVY[®]. Hear their voices. Watch their stories. And see how each and every one of them goes beyond their diagnosis to battle stigma, stay true to themselves, and love who they are, inside and out. [See their stories at BIKTARVY.com.](https://www.gilead.com/medicines/aids/hiv/biktarvy)

To discover more information and resources, visit [BIKTARVY.com.](https://www.gilead.com/medicines/aids/hiv/biktarvy)

*Note: This information is an estimate derived from the use of information under license from the following IQVIA information service: *IQVIA NPA Weekly*, for the period week ending 04/19/2019 through week ending 01/20/2023. IQVIA expressly reserves all rights, including rights of copying, distribution, and republication.



BIKTARVY, BIKTARVY ANYWHERE, the BIKTARVY Logo, ADVANCING ACCESS, BUILT ON DESCOVY, the BUILT ON DESCOVY Logo, DESCOVY, GILEAD, the GILEAD Logo, GSI, KEEP BEING YOU, LOVE WHAT'S INSIDE, and TRUVADA are trademarks of Gilead Sciences, Inc., or its related companies. All other marks referenced herein are the property of their respective owners.
© 2023 Gilead Sciences, Inc. All rights reserved. US-BVYC-0255 05/23



BIKTARVY®

bictegravir 50mg/emtricitabine 200mg/
tenofovir alafenamide 25mg tablets

IMPORTANT FACTS

This is only a brief summary of important information about BIKTARVY® and does not replace talking to your healthcare provider about your condition and your treatment.

(bik-TAR-vee)

MOST IMPORTANT INFORMATION ABOUT BIKTARVY

BIKTARVY may cause serious side effects, including:

- **Worsening of hepatitis B (HBV) infection.** Your healthcare provider will test you for HBV. If you have both HIV-1 and HBV, your HBV may suddenly get worse if you stop taking BIKTARVY. Do not stop taking BIKTARVY without first talking to your healthcare provider, as they will need to check your health regularly for several months, and may give you HBV medicine.

ABOUT BIKTARVY

BIKTARVY is a complete, 1-pill, once-a-day prescription medicine used to treat HIV-1 in adults and children who weigh at least 55 pounds. It can either be used in people who have never taken HIV-1 medicines before, or people who are replacing their current HIV-1 medicines and whose healthcare provider determines they meet certain requirements.

BIKTARVY does not cure HIV-1 or AIDS. HIV-1 is the virus that causes AIDS.

Do NOT take BIKTARVY if you also take a medicine that contains:

- dofetilide
- rifampin
- any other medicines to treat HIV-1

BEFORE TAKING BIKTARVY

Tell your healthcare provider all your medical conditions, including if you:

- Have or have had any kidney or liver problems, including hepatitis infection.
- Are pregnant or plan to become pregnant.
- Are breastfeeding (nursing) or plan to breastfeed. Do not breastfeed if you have HIV-1 because of the risk of passing HIV-1 to your baby.

Tell your healthcare provider about all the medicines you take:

- Keep a list that includes all prescription and over-the-counter medicines, antacids, laxatives, vitamins, and herbal supplements, and show it to your healthcare provider and pharmacist.
- Ask your healthcare provider or pharmacist about medicines that interact with BIKTARVY.

POSSIBLE SIDE EFFECTS OF BIKTARVY

BIKTARVY can cause serious side effects, including:

- Those in the “Most Important Information About BIKTARVY” section.
- Changes in your immune system.
- New or worse kidney problems, including kidney failure.
- Too much lactic acid in your blood (lactic acidosis), which is a serious but rare medical emergency that can lead to death. Tell your healthcare provider right away if you get these symptoms: weakness or being more tired than usual, unusual muscle pain, being short of breath or fast breathing, stomach pain with nausea and vomiting, cold or blue hands and feet, feel dizzy or lightheaded, or a fast or abnormal heartbeat.
- Severe liver problems, which in rare cases can lead to death. Tell your healthcare provider right away if you get these symptoms: skin or the white part of your eyes turns yellow, dark “tea-colored” urine, light-colored stools, loss of appetite for several days or longer, nausea, or stomach-area pain.
- **The most common side effects of BIKTARVY** in clinical studies were diarrhea (6%), nausea (6%), and headache (5%).

These are not all the possible side effects of BIKTARVY. Tell your healthcare provider right away if you have any new symptoms while taking BIKTARVY.

Your healthcare provider will need to do tests to monitor your health before and during treatment with BIKTARVY.

HOW TO TAKE BIKTARVY

Take BIKTARVY 1 time each day with or without food.

GET MORE INFORMATION

- This is only a brief summary of important information about BIKTARVY. Talk to your healthcare provider or pharmacist to learn more.
- Go to BIKTARVY.com or call 1-800-GILEAD-5
- If you need help paying for your medicine, visit BIKTARVY.com for program information.



BIKTARVY, the BIKTARVY Logo, GILEAD, and the GILEAD Logo are trademarks of Gilead Sciences, Inc., or its related companies. Version date: February 2021
© 2023 Gilead Sciences, Inc. All rights reserved. US-BVYC-0255 05/23

(des-KOH-vee)

IMPORTANT FACTS

This is only a brief summary of important information about **DESCOVY**[®] and does not replace talking to your healthcare provider about your condition and your treatment.

MOST IMPORTANT INFORMATION ABOUT DESCOVY

DESCOVY may cause serious side effects, including:

- **Worsening of hepatitis B (HBV) infection.** Your healthcare provider will test you for HBV. If you have both HIV-1 and HBV, your HBV may suddenly get worse if you stop taking DESCOVY. Do not stop taking DESCOVY without first talking to your healthcare provider, as they will need to check your health regularly for several months or give you HBV medicine.

ABOUT DESCOVY

- DESCOVY is a prescription medicine that is used together with other HIV-1 medicines to treat HIV-1 in people who weigh at least 77 lbs (35kg).
- **DESCOVY does not cure HIV-1 or AIDS.** HIV-1 is the virus that causes AIDS.

BEFORE TAKING DESCOVY

Tell your healthcare provider if you:

- Have or had any kidney or liver problems, including hepatitis infection.
- Have any other medical condition.
- Are pregnant or plan to become pregnant.
- Are breastfeeding (nursing) or plan to breastfeed. Do not breastfeed if you have HIV-1 because of the risk of passing HIV-1 to your baby.

Tell your healthcare provider about all the medicines you take:

- Keep a list that includes all prescription and over-the-counter medicines, vitamins, and herbal supplements, and show it to your healthcare provider and pharmacist.
- Ask your healthcare provider or pharmacist about medicines that should not be taken with DESCOVY.

HOW TO TAKE DESCOVY

- DESCOVY is a one pill, once a day HIV-1 medicine that is taken with other HIV-1 medicines.
- Take DESCOVY with or without food.

POSSIBLE SIDE EFFECTS OF DESCOVY

DESCOVY can cause serious side effects, including:

- Those in the “Most Important Information About DESCOVY” section.
- Changes in your immune system.
- New or worse kidney problems, including kidney failure.
- Too much lactic acid in your blood (lactic acidosis), which is a serious but rare medical emergency that can lead to death. Tell your healthcare provider right away if you get these symptoms: weakness or being more tired than usual, unusual muscle pain, being short of breath or fast breathing, stomach pain with nausea and vomiting, cold or blue hands and feet, feel dizzy or lightheaded, or a fast or abnormal heartbeat.
- Severe liver problems, which in rare cases can lead to death. Tell your healthcare provider right away if you get these symptoms: skin or the white part of your eyes turns yellow, dark “tea-colored” urine, light-colored stools, loss of appetite for several days or longer, nausea, or stomach-area pain.

The most common side effect of DESCOVY is nausea.

These are not all the possible side effects of DESCOVY. Tell your healthcare provider right away if you have any new symptoms while taking DESCOVY.

Your healthcare provider will need to do tests to monitor your health before and during treatment with DESCOVY.

GET MORE INFORMATION

- This is only a brief summary of important information about DESCOVY. Talk to your healthcare provider or pharmacist to learn more.
- Go to DESCOVY.com or call 1-800-GILEAD-5
- If you need help paying for your medicine, visit DESCOVY.com for program information.